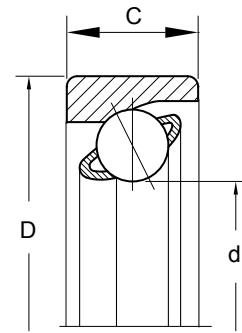
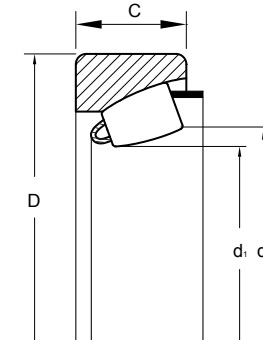


**Angular contact bearing without inner ring**



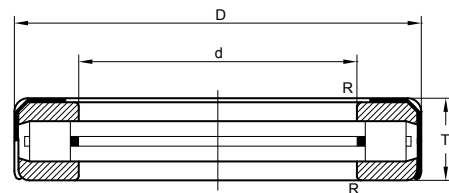
KML No.	Boundary dimensions mm			Mass Kg	SKF No.
	d	D	C		
5666683/93	20.12	38.1	7.9	0.04	311142+311161

**Angular contact - spherical roller bearing without inner ring**



KML No.	Boundary dimensions mm			
	d <sub>1</sub>	d	D	C
F-10983RZ	30.8	36.266	55.61	10.668

**Thrust roller bearing - steering pivot - with retainer**



KML No.	Boundary dimensions mm				Mass Kg
	d	D	T	R	
T199	51.054	74.612	15.875	0.8	0.20
T113	28.829	55.562	15.875	0.8	